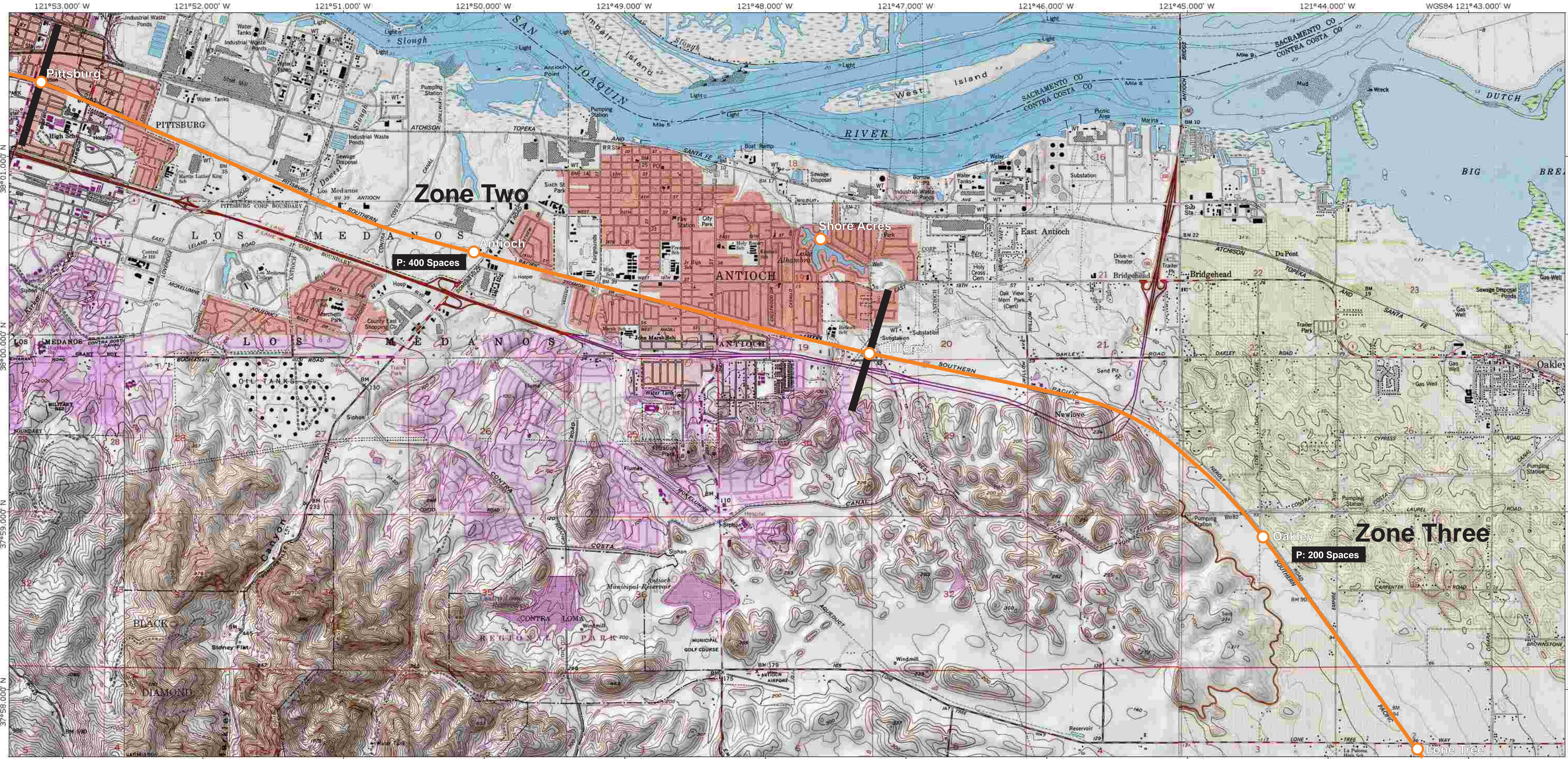


Delta DMU Operations:
 Service Type: Modern DMU
 Span of Service: 5am - 1pm
 Headway: 15m peak / 30m off-peak
 Timepoint(s): North Concord BART
 Fare: \$1.00 per zone / Three Zones Total (see maps)
 Notes: 500 car Park and Ride lots at all stations EXCEPT North Concord and Brentwood. \$2/day charge at lots. Free transfers FROM DMU to local bus.

7/4/03



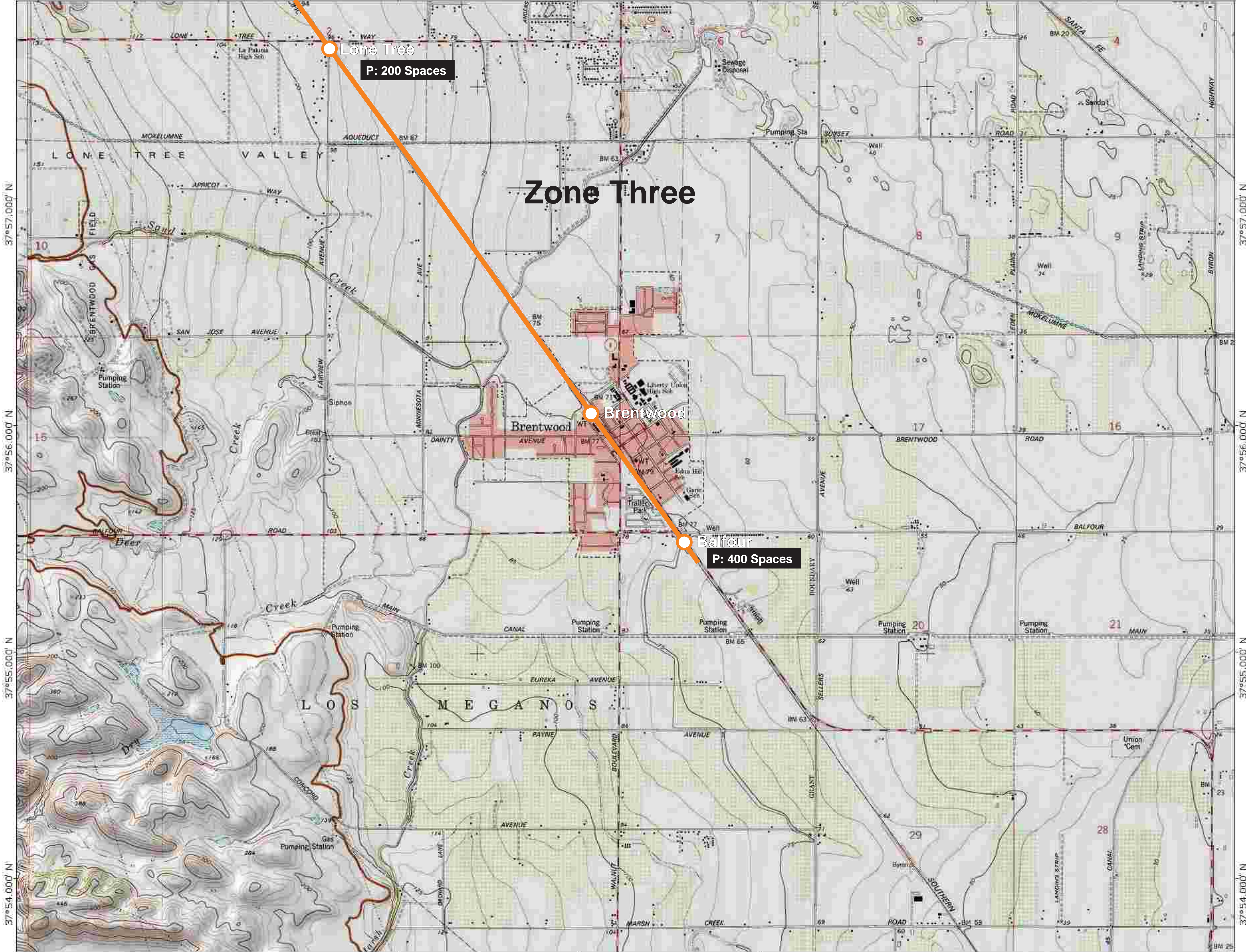
Zone Two

Zone Three

P: 400 Spaces

P: 200 Spaces

121°45.000' W 121°44.000' W 121°43.000' W 121°42.000' W 121°41.000' W 121°40.000' W WGS84 121°39.000' W



37°57.000' N
37°56.000' N
37°55.000' N
37°54.000' N

37°57.000' N
37°56.000' N
37°55.000' N
37°54.000' N

121°45.000' W 121°44.000' W 121°43.000' W 121°42.000' W 121°41.000' W 121°40.000' W WGS84 121°39.000' W

TN 15° MN Delta DMU / BRT

