

Oakland Airport BRT Operations:

Service Type: Bus Rapid (assumes TPS treatments)

Span of Service: 24 hours

Headway: 10m peak / 15m off-peak / 30 late night

Timepoint(s): Coliseum BART

Fare: \$1.00

Notes: BRT operation with exclusive lanes. New off-street terminal at BART and new connection between 66th Street and Edgewater. Curbside Stops at OAK.

7/4/03

37°45.000' N

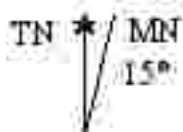
37°45.000' N

37°44.000' N

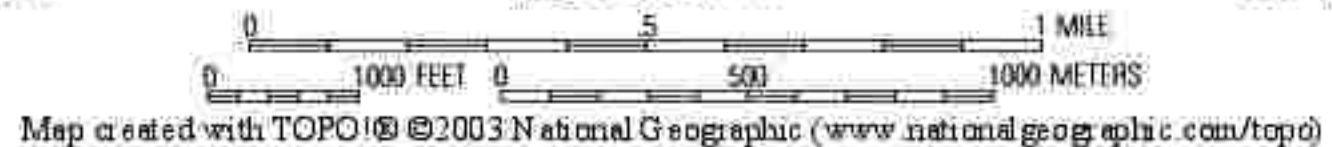
37°44.000' N

37°43.000' N

37°43.000' N



Oakland Airport BRT



Map created with TOPO! © 2003 National Geographic (www.nationalgeographic.com/topo)

