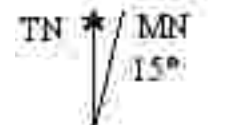
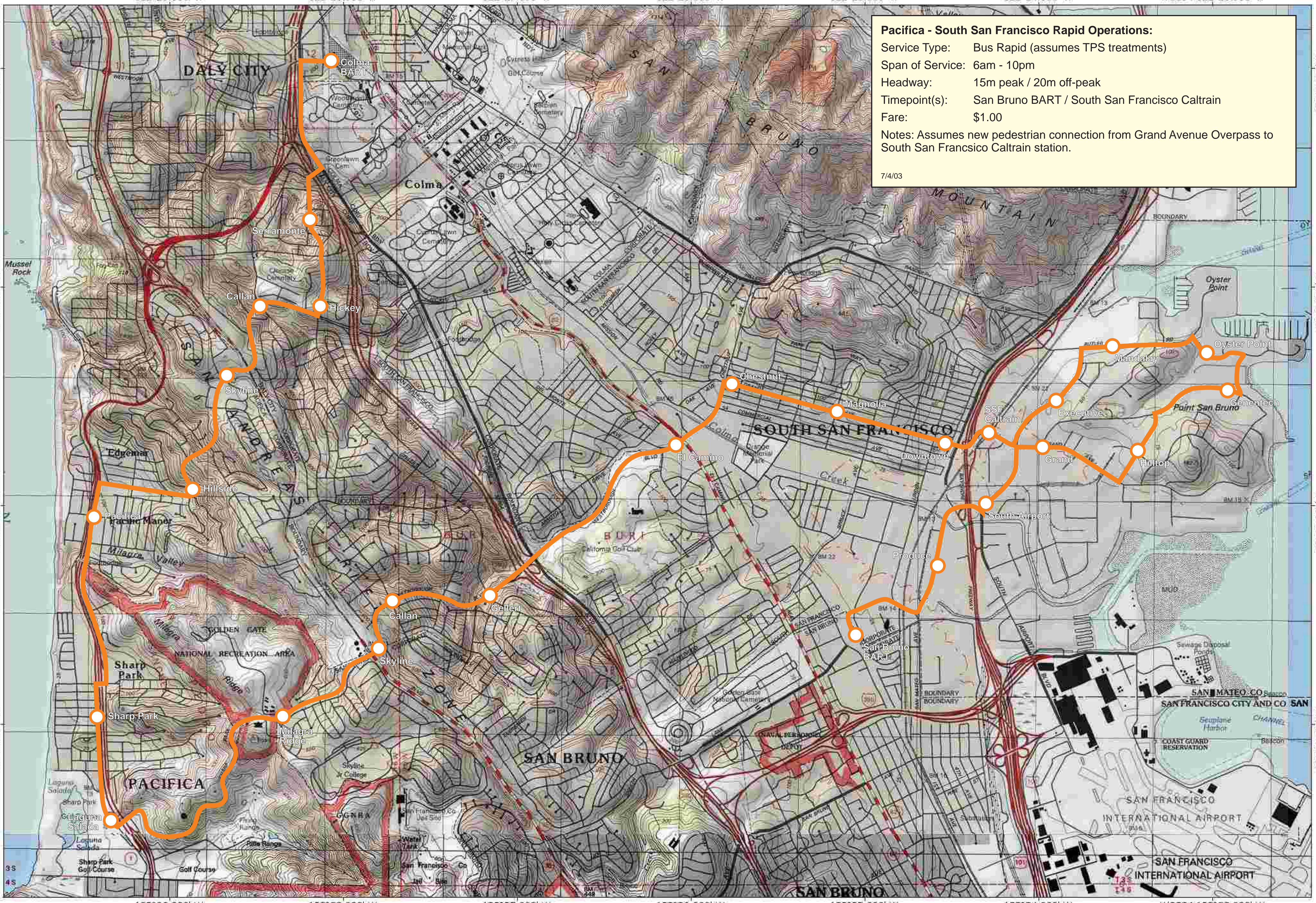


Pacifica - South San Francisco Rapid Operations:
 Service Type: Bus Rapid (assumes TPS treatments)
 Span of Service: 6am - 10pm
 Headway: 15m peak / 20m off-peak
 Timepoint(s): San Bruno BART / South San Francisco Caltrain
 Fare: \$1.00
 Notes: Assumes new pedestrian connection from Grand Avenue Overpass to South San Francisco Caltrain station.
 7/4/03



Pacifica Rapid

Map created with TOPOI © 2003 National Geographic (www.nationalgeographic.com/topo)

Headway = 10m / 20m / 10m Fare = \$1.00