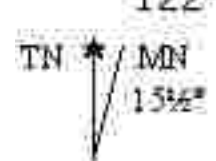
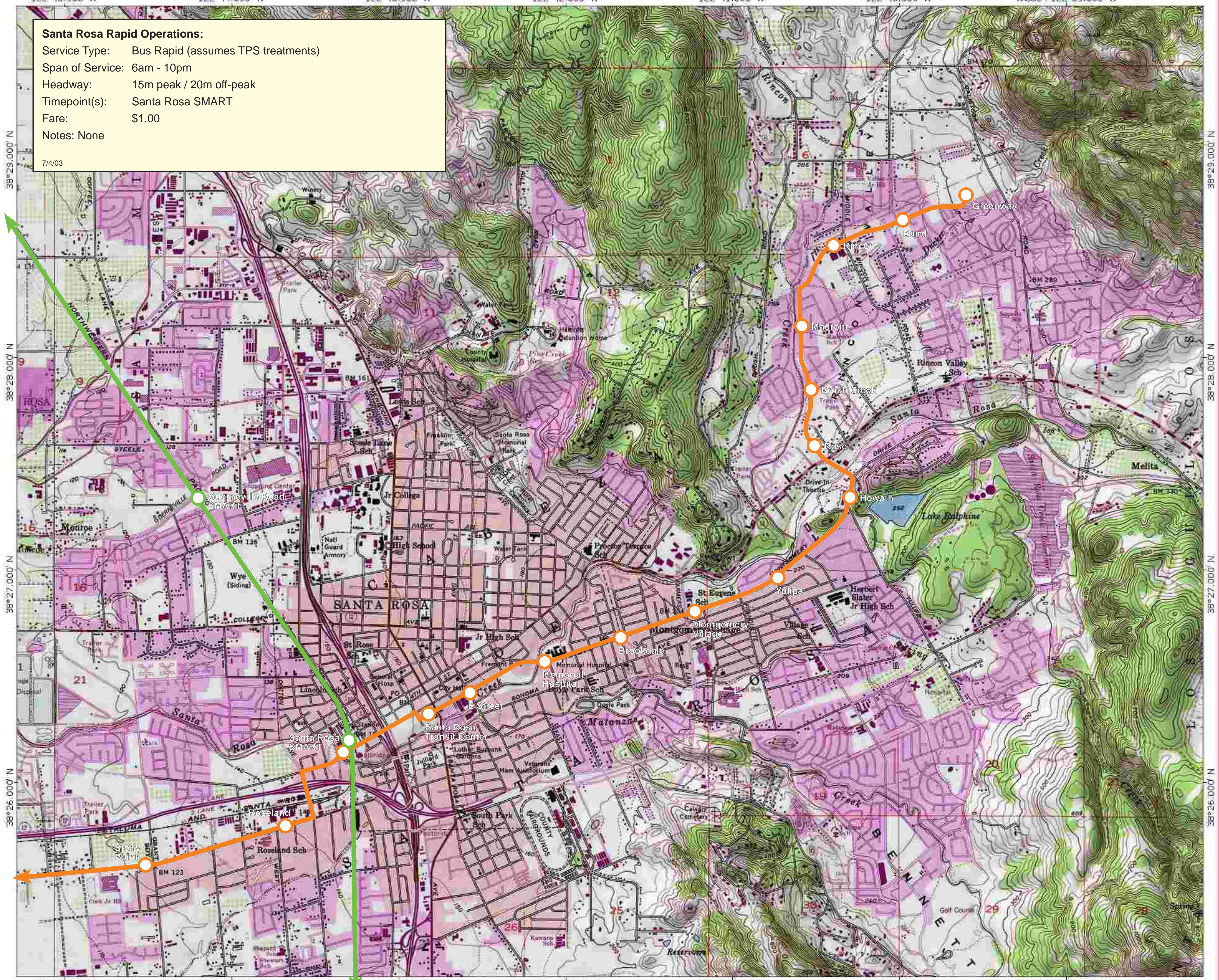


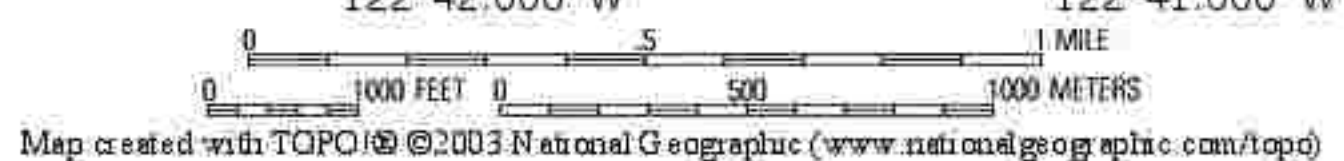
Santa Rosa Rapid Operations:

Service Type: Bus Rapid (assumes TPS treatments)
 Span of Service: 6am - 10pm
 Headway: 15m peak / 20m off-peak
 Timepoint(s): Santa Rosa SMART
 Fare: \$1.00
 Notes: None

7/4/03



Santa Rosa Rapid



Santa Rosa Rapid

