

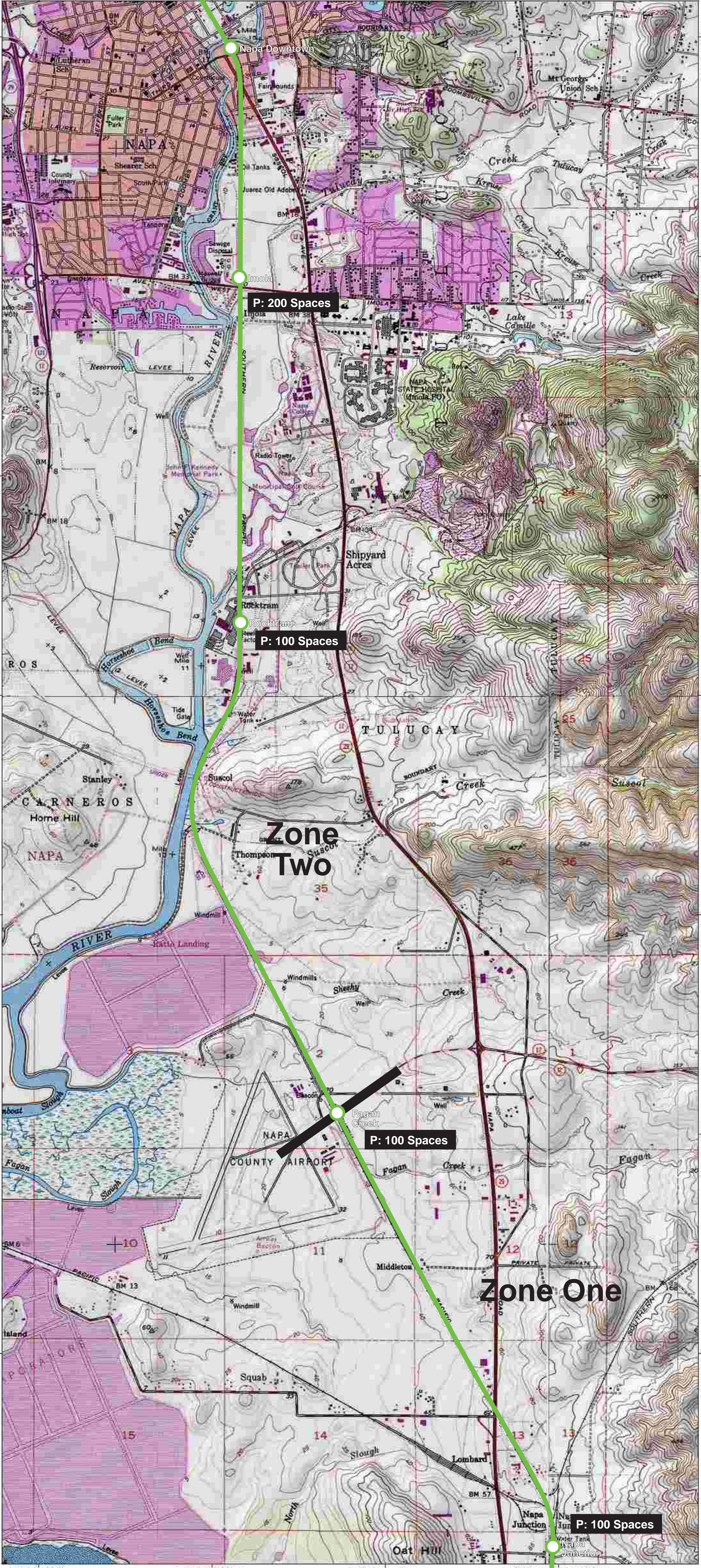
**Zone Two**

**P: 200 Spaces**

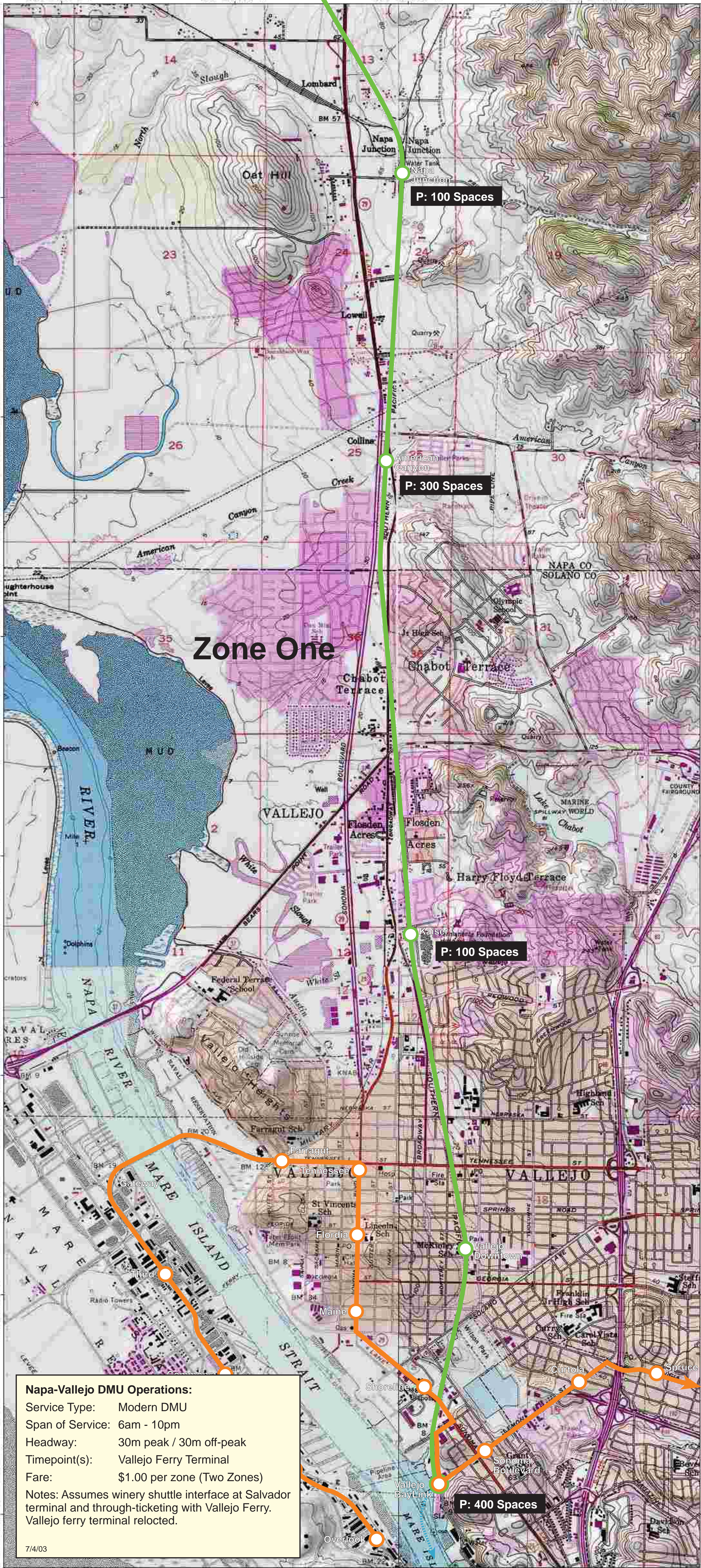
**P: 200 Spaces**

**P: 200 Spaces**









P: 100 Spaces

P: 300 Spaces

P: 100 Spaces

P: 400 Spaces

Zone One

**Napa-Vallejo DMU Operations:**  
 Service Type: Modern DMU  
 Span of Service: 6am - 10pm  
 Headway: 30m peak / 30m off-peak  
 Timepoint(s): Vallejo Ferry Terminal  
 Fare: \$1.00 per zone (Two Zones)  
 Notes: Assumes winery shuttle interface at Salvador terminal and through-ticketing with Vallejo Ferry. Vallejo ferry terminal relocated.

7/4/03